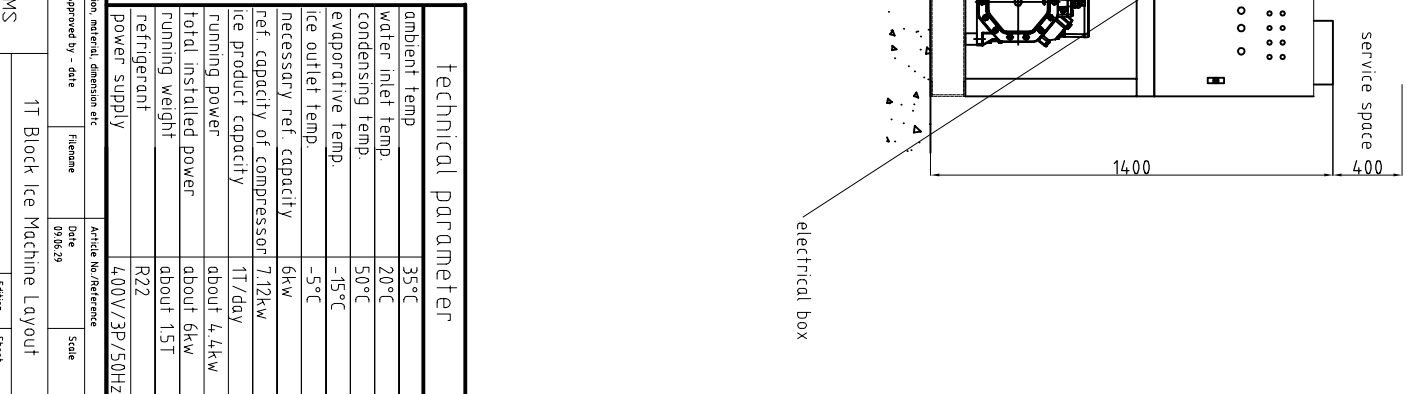


Remark:

- 1, the size of block ice is: 120x120x390mm, 5kg/block, 1T/day;
- 2, the above of the dimensions are for reference only, please refer to the actual situations;
- 3, this equipment should be indoors;
- 4, the equipment should be connected with water pipe and power supply, etc., according to our instruction.

water inlet 1"
 water inlet pressure 1-5bar
 water inlet flow rate should be more than 30L/min
 water outlet 1"



technical parameter

ambient temp	35°C
water inlet Temp	20°C
condensing Temp.	50°C
evaporative Temp.	-15°C
ice outlet Temp.	-5°C
necessary ref. capacity	6kw
ref. capacity of compressor	7.12kw
ice product capacity	1T/day
running power	about 4.4kw
total installed power	about 6kw
running weight	about 15T
refrigerant	R22
power supply	400V/3P/50Hz

Item No.	Quantity	Title/Name, designation, material, dimension etc	Article No./Reference
Designed by TUN	checked by	Approved by - date	File name 020629
RECDM ICE SYSTEMS			Date
1T Block Ice Machine Layout			Scale
BIMIGAF			Edition
			Sheet