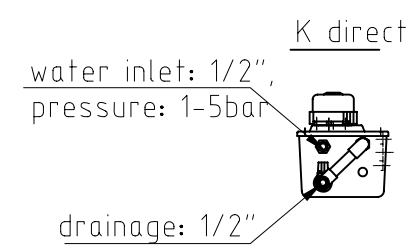
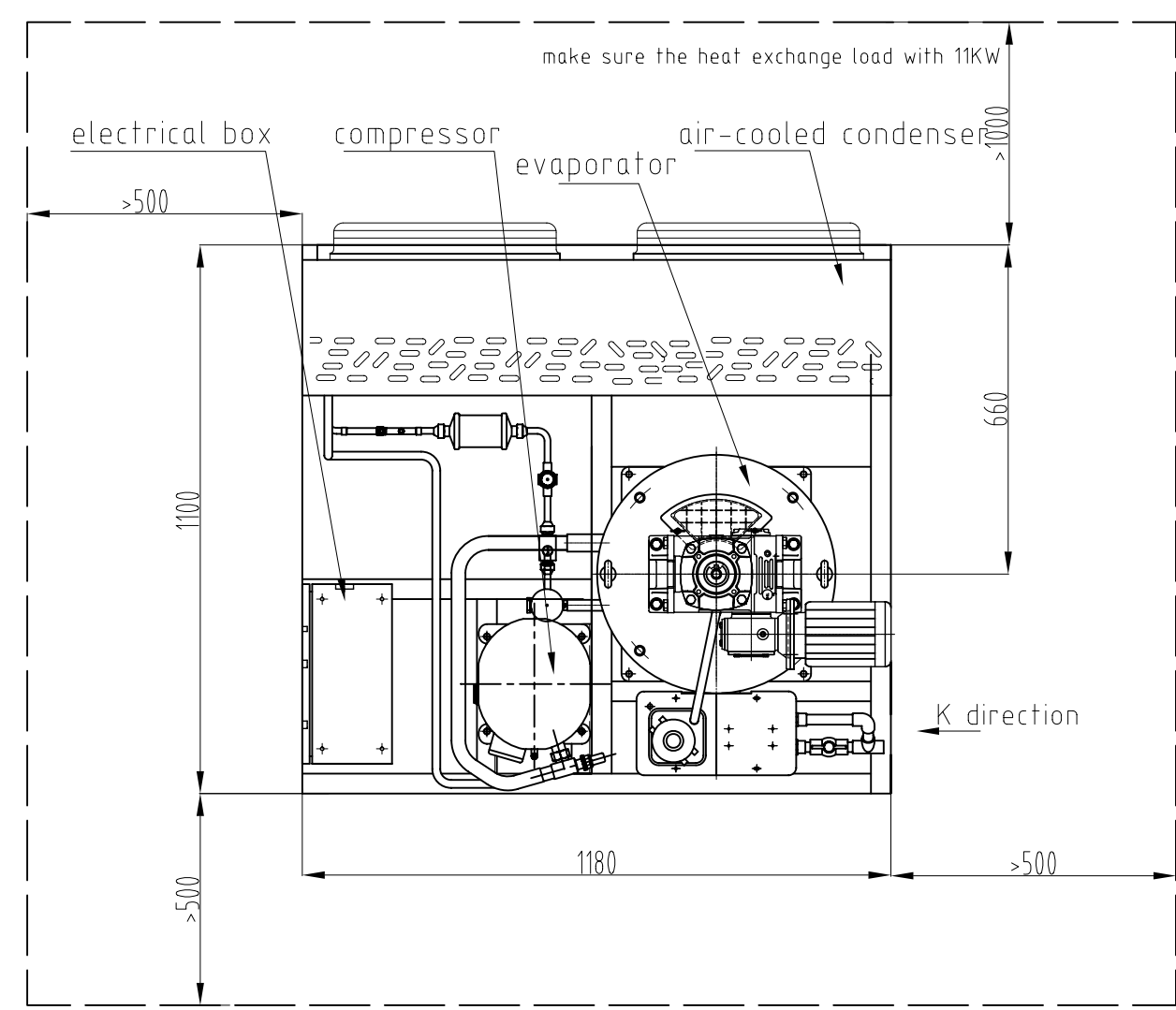


Remark:

1. The unit should be indoor, and make sure the enough space for operation and service;
2. The equipments should be connected with water pipe, power supply and refrigeration pipeline, according to our instruction.
3. No account according to our standard, others is subject to design;
4. This drawing is only for you reference, delivery range is subject to contract.
5. The unit is with SUS304 base.



Technical parameter

water inlet temp.	16°C
ambient temp.	32°C
refrigeration capacity	6.05kW
production capacity	1.0t/24hr
power supply	380V/50Hz/3P
refrigerant	R404A
installation power	about 5.4kW
water consumption	42L/h
running weight	about 450kg
exterior size	1180x1100x825

Itemref	Quantity	Title/Name, designation, material, dimension etc	Article No./Reference		
Designed by	Checked by	Approved by - date	File name	Date	Scale
		1T FLAKE ICE MACHINE			
		RECOM F10AS-5	Edition	Sheet	